

DURACORNUM MOISTURE CONTROL SYSTEM



www.duracornum.com

QUICK APPLICATION GUIDE

1

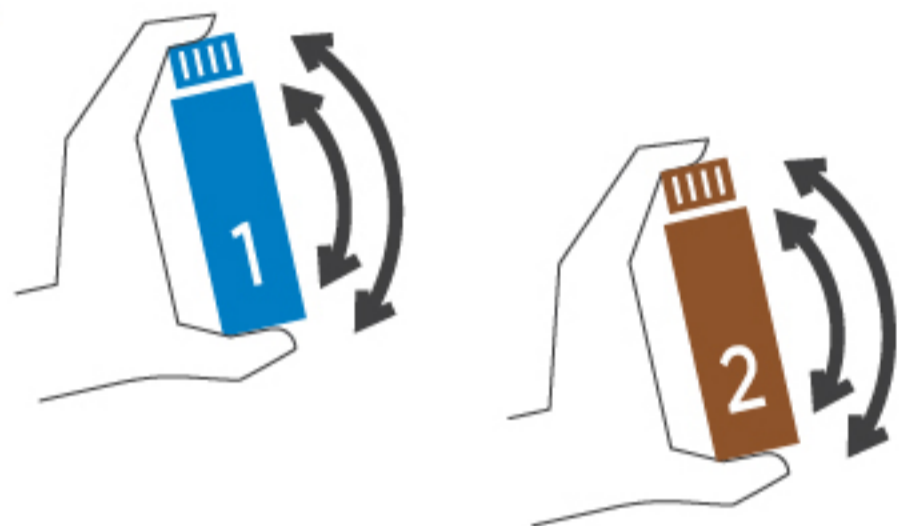
CLEAN HOOVES



Pick & Brush hooves clean.
DO NOT USE WATER TO CLEAN HOOVES.

2

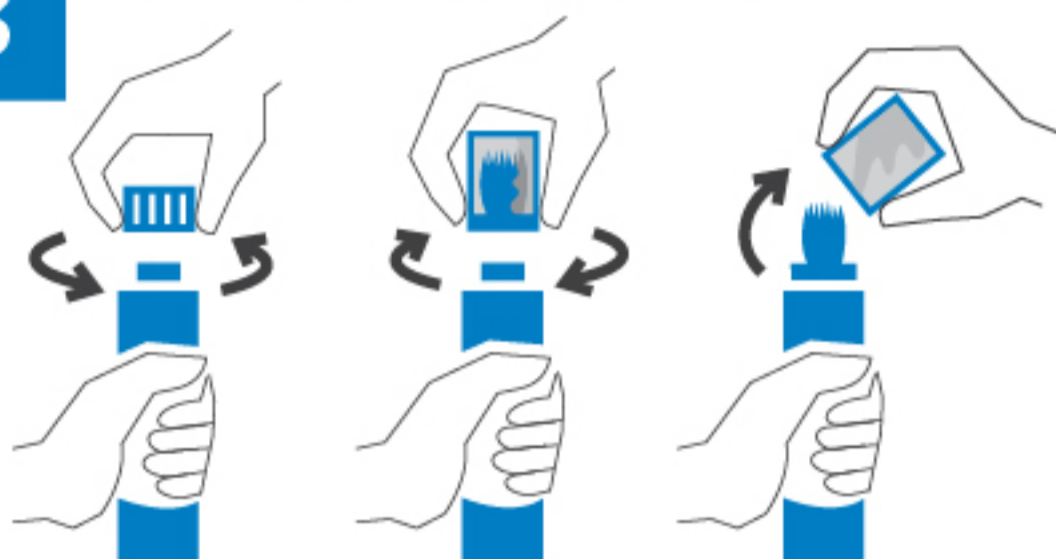
SHAKE BOTTLES



Thoroughly SHAKE both bottles before use.

3

INSTALL BRUSH-CAPS

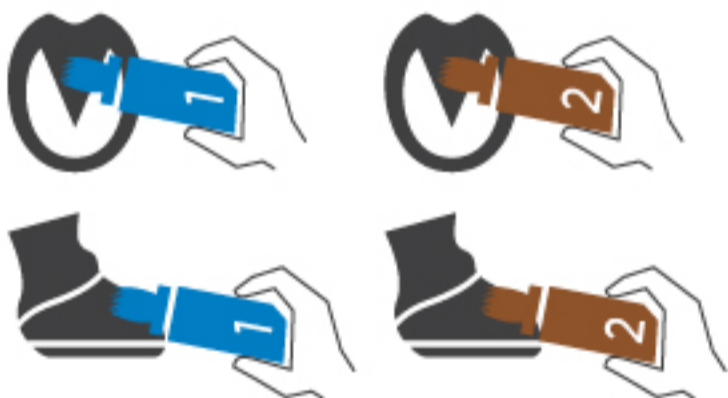


Unscrew the Child-Resistant Storage-Caps and screw the included Brush-Caps onto each bottle.
DO NOT SHAKE WITH BRUSH-CAPS ON BOTTLES.

4

BRUSH-ON PRODUCT

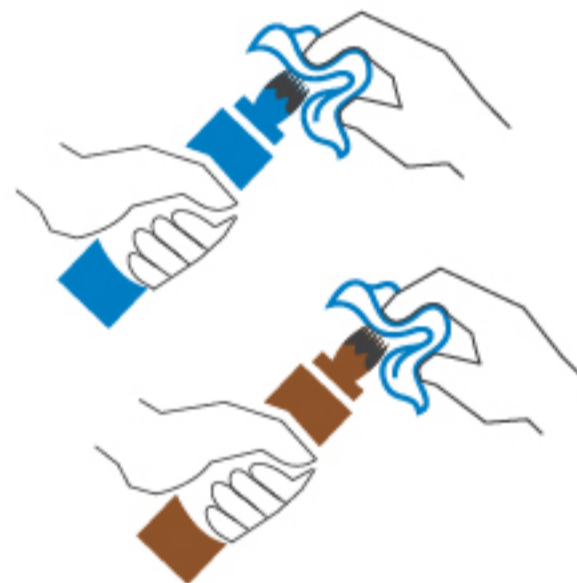
TIP: Use just enough product to wet hoof.



This System is designed to specifically be applied one product directly over the other (wet-on-wet). First paint **a very thin coat** of STEP #1 on the hoof sole, frog, buttress & wall, then immediately paint **a very thin coat** of STEP #2 on those same areas. Repeat for each individual hoof.

5

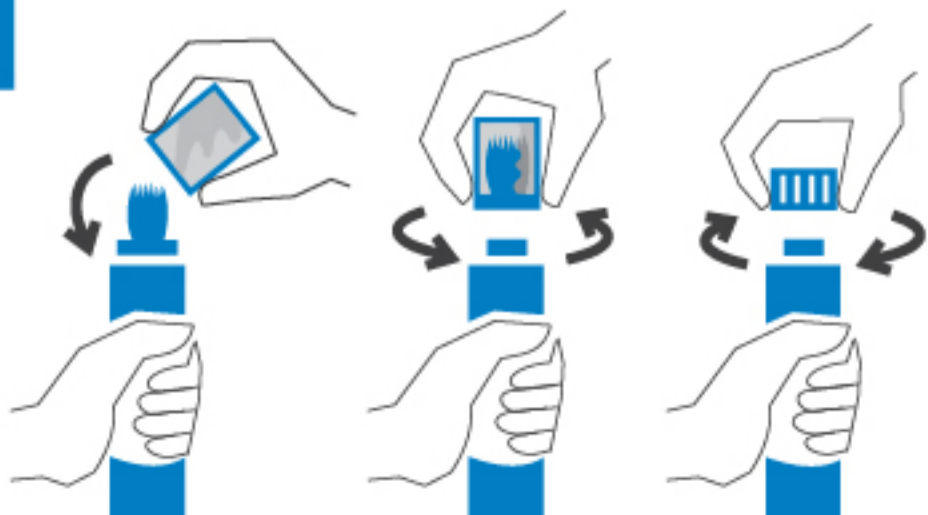
WIPE OFF BRUSHES



Wipe off excess liquid on both Brush-Caps' bristles with a clean cloth or paper towel.

6

REINSTALL STORAGE-CAPS



Remove Brush-Caps and screw on Storage-Caps to both STEP #1 & STEP #2 bottles.

